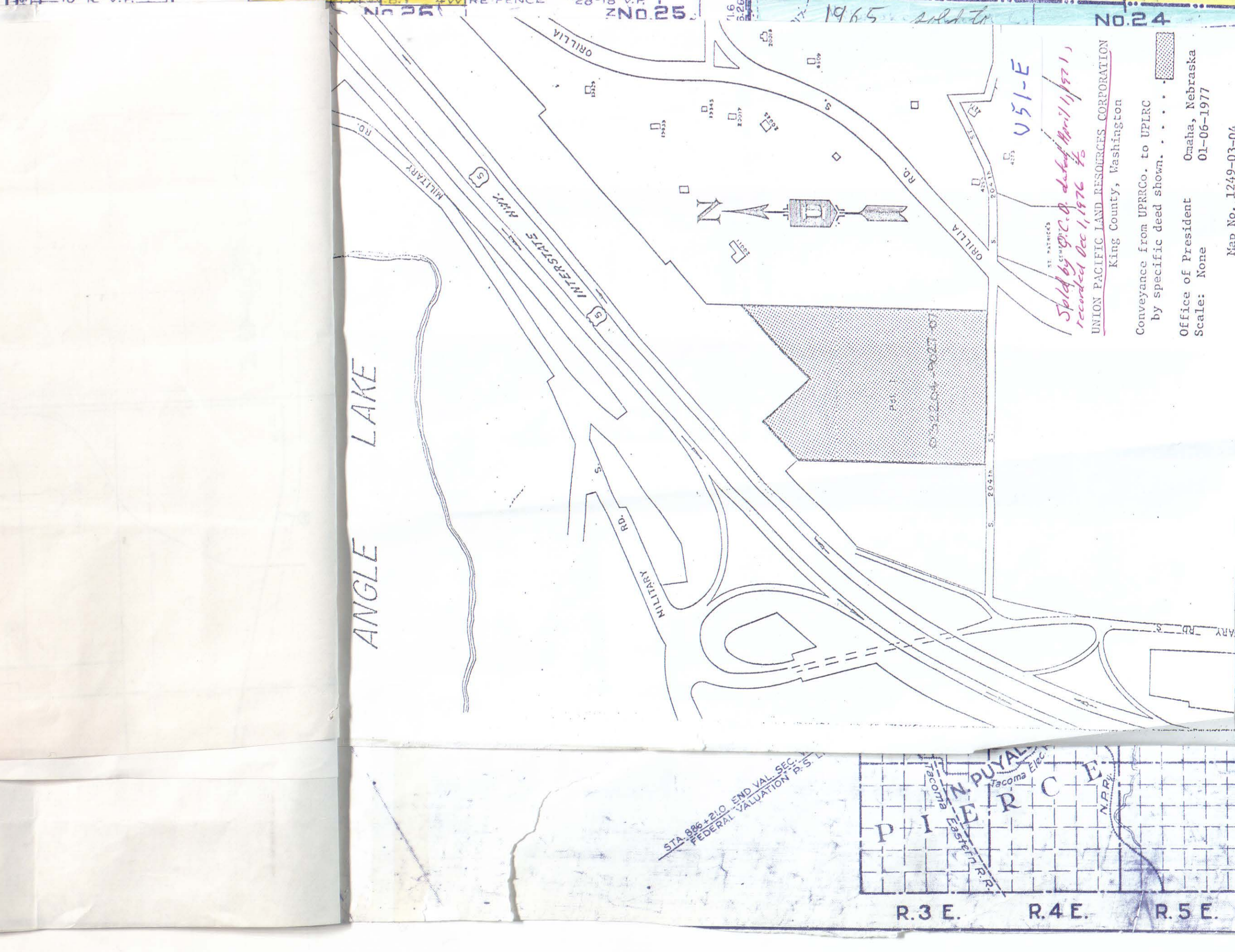
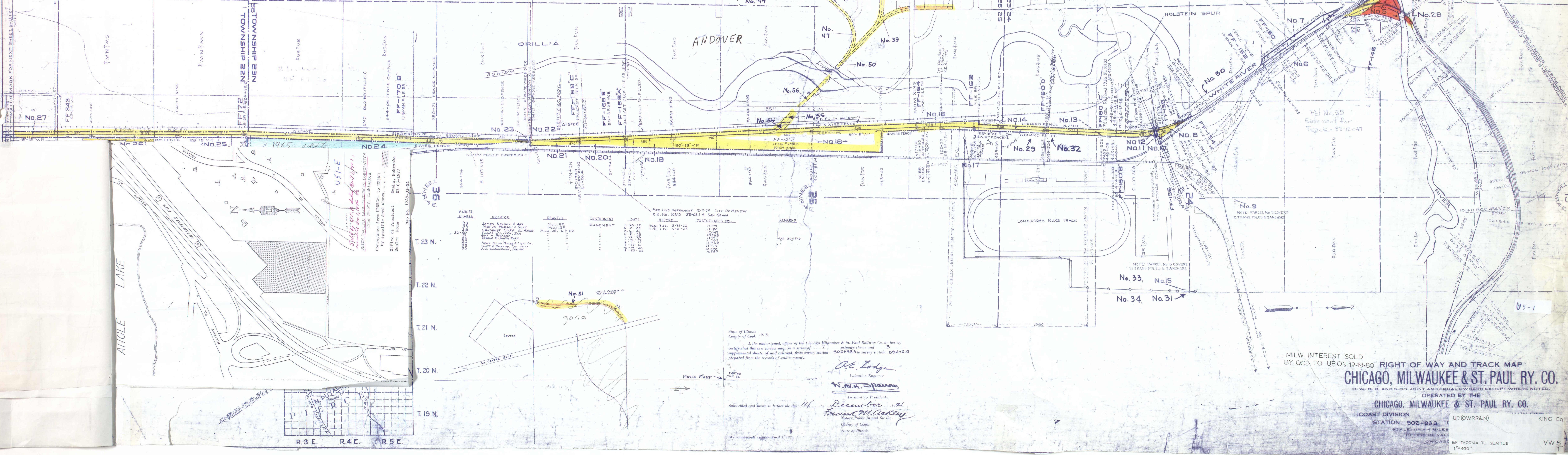


No.	Owner	Acres	Date	Remarks
1	Chicago, Milwaukee & St. Paul Ry. Co.	1.12	3-13-12	Conveys individual interest.
2	Chicago, Milwaukee & St. Paul Ry. Co.	1.12	3-27-12	139,843 sq. ft. 10,171
3	Chicago, Milwaukee & St. Paul Ry. Co.	1.12	11-11-12	150,461 sq. ft. 10,171
4	Chicago, Milwaukee & St. Paul Ry. Co.	1.12	10-11-12	151,833 sq. ft. 10,171
5	Chicago, Milwaukee & St. Paul Ry. Co.	1.12	10-11-12	151,833 sq. ft. 10,171
6	Chicago, Milwaukee & St. Paul Ry. Co.	1.12	10-11-12	151,833 sq. ft. 10,171
7	Chicago, Milwaukee & St. Paul Ry. Co.	1.12	10-11-12	151,833 sq. ft. 10,171
8	Chicago, Milwaukee & St. Paul Ry. Co.	1.12	10-11-12	151,833 sq. ft. 10,171
9	Chicago, Milwaukee & St. Paul Ry. Co.	1.12	10-11-12	151,833 sq. ft. 10,171
10	Chicago, Milwaukee & St. Paul Ry. Co.	1.12	10-11-12	151,833 sq. ft. 10,171
11	Chicago, Milwaukee & St. Paul Ry. Co.	1.12	10-11-12	151,833 sq. ft. 10,171
12	Chicago, Milwaukee & St. Paul Ry. Co.	1.12	10-11-12	151,833 sq. ft. 10,171
13	Chicago, Milwaukee & St. Paul Ry. Co.	1.12	10-11-12	151,833 sq. ft. 10,171
14	Chicago, Milwaukee & St. Paul Ry. Co.	1.12	10-11-12	151,833 sq. ft. 10,171
15	Chicago, Milwaukee & St. Paul Ry. Co.	1.12	10-11-12	151,833 sq. ft. 10,171
16	Chicago, Milwaukee & St. Paul Ry. Co.	1.12	10-11-12	151,833 sq. ft. 10,171
17	Chicago, Milwaukee & St. Paul Ry. Co.	1.12	10-11-12	151,833 sq. ft. 10,171
18	Chicago, Milwaukee & St. Paul Ry. Co.	1.12	10-11-12	151,833 sq. ft. 10,171
19	Chicago, Milwaukee & St. Paul Ry. Co.	1.12	10-11-12	151,833 sq. ft. 10,171
20	Chicago, Milwaukee & St. Paul Ry. Co.	1.12	10-11-12	151,833 sq. ft. 10,171
21	Chicago, Milwaukee & St. Paul Ry. Co.	1.12	10-11-12	151,833 sq. ft. 10,171
22	Chicago, Milwaukee & St. Paul Ry. Co.	1.12	10-11-12	151,833 sq. ft. 10,171
23	Chicago, Milwaukee & St. Paul Ry. Co.	1.12	10-11-12	151,833 sq. ft. 10,171
24	Chicago, Milwaukee & St. Paul Ry. Co.	1.12	10-11-12	151,833 sq. ft. 10,171
25	Chicago, Milwaukee & St. Paul Ry. Co.	1.12	10-11-12	151,833 sq. ft. 10,171
26	Chicago, Milwaukee & St. Paul Ry. Co.	1.12	10-11-12	151,833 sq. ft. 10,171
27	Chicago, Milwaukee & St. Paul Ry. Co.	1.12	10-11-12	151,833 sq. ft. 10,171
28	Chicago, Milwaukee & St. Paul Ry. Co.	1.12	10-11-12	151,833 sq. ft. 10,171
29	Chicago, Milwaukee & St. Paul Ry. Co.	1.12	10-11-12	151,833 sq. ft. 10,171
30	Chicago, Milwaukee & St. Paul Ry. Co.	1.12	10-11-12	151,833 sq. ft. 10,171
31	Chicago, Milwaukee & St. Paul Ry. Co.	1.12	10-11-12	151,833 sq. ft. 10,171
32	Chicago, Milwaukee & St. Paul Ry. Co.	1.12	10-11-12	151,833 sq. ft. 10,171
33	Chicago, Milwaukee & St. Paul Ry. Co.	1.12	10-11-12	151,833 sq. ft. 10,171
34	Chicago, Milwaukee & St. Paul Ry. Co.	1.12	10-11-12	151,833 sq. ft. 10,171
35	Chicago, Milwaukee & St. Paul Ry. Co.	1.12	10-11-12	151,833 sq. ft. 10,171
36	Chicago, Milwaukee & St. Paul Ry. Co.	1.12	10-11-12	151,833 sq. ft. 10,171
37	Chicago, Milwaukee & St. Paul Ry. Co.	1.12	10-11-12	151,833 sq. ft. 10,171
38	Chicago, Milwaukee & St. Paul Ry. Co.	1.12	10-11-12	151,833 sq. ft. 10,171
39	Chicago, Milwaukee & St. Paul Ry. Co.	1.12	10-11-12	151,833 sq. ft. 10,171
40	Chicago, Milwaukee & St. Paul Ry. Co.	1.12	10-11-12	151,833 sq. ft. 10,171
41	Chicago, Milwaukee & St. Paul Ry. Co.	1.12	10-11-12	151,833 sq. ft. 10,171
42	Chicago, Milwaukee & St. Paul Ry. Co.	1.12	10-11-12	151,833 sq. ft. 10,171
43	Chicago, Milwaukee & St. Paul Ry. Co.	1.12	10-11-12	151,833 sq. ft. 10,171
44	Chicago, Milwaukee & St. Paul Ry. Co.	1.12	10-11-12	151,833 sq. ft. 10,171
45	Chicago, Milwaukee & St. Paul Ry. Co.	1.12	10-11-12	151,833 sq. ft. 10,171
46	Chicago, Milwaukee & St. Paul Ry. Co.	1.12	10-11-12	151,833 sq. ft. 10,171
47	Chicago, Milwaukee & St. Paul Ry. Co.	1.12	10-11-12	151,833 sq. ft. 10,171
48	Chicago, Milwaukee & St. Paul Ry. Co.	1.12	10-11-12	151,833 sq. ft. 10,171
49	Chicago, Milwaukee & St. Paul Ry. Co.	1.12	10-11-12	151,833 sq. ft. 10,171
50	Chicago, Milwaukee & St. Paul Ry. Co.	1.12	10-11-12	151,833 sq. ft. 10,171
51	Chicago, Milwaukee & St. Paul Ry. Co.	1.12	10-11-12	151,833 sq. ft. 10,171
52	Chicago, Milwaukee & St. Paul Ry. Co.	1.12	10-11-12	151,833 sq. ft. 10,171
53	Chicago, Milwaukee & St. Paul Ry. Co.	1.12	10-11-12	151,833 sq. ft. 10,171
54	Chicago, Milwaukee & St. Paul Ry. Co.	1.12	10-11-12	151,833 sq. ft. 10,171
55	Chicago, Milwaukee & St. Paul Ry. Co.	1.12	10-11-12	151,833 sq. ft. 10,171
56	Chicago, Milwaukee & St. Paul Ry. Co.	1.12	10-11-12	151,833 sq. ft. 10,171
57	Chicago, Milwaukee & St. Paul Ry. Co.	1.12	10-11-12	151,833 sq. ft. 10,171
58	Chicago, Milwaukee & St. Paul Ry. Co.	1.12	10-11-12	151,833 sq. ft. 10,171
59	Chicago, Milwaukee & St. Paul Ry. Co.	1.12	10-11-12	151,833 sq. ft. 10,171
60	Chicago, Milwaukee & St. Paul Ry. Co.	1.12	10-11-12	151,833 sq. ft. 10,171



PARCEL NUMBER	GRANTOR	GRANTEE	INSTRUMENT	DATE	REMARKS
30	JAMES NELSON & WIFE	MILWAUKEE & ST. PAUL RY. CO.	EASEMENT	3-30-22	1165-312, 3-31-22
	MARION NELSON & WIFE	MILWAUKEE & ST. PAUL RY. CO.	EASEMENT	4-17-22	1165-312, 4-18-22
	WILLIAM NELSON & WIFE	MILWAUKEE & ST. PAUL RY. CO.	EASEMENT	4-17-22	1165-312, 4-18-22
	WILLIAM NELSON & WIFE	MILWAUKEE & ST. PAUL RY. CO.	EASEMENT	4-17-22	1165-312, 4-18-22
	WILLIAM NELSON & WIFE	MILWAUKEE & ST. PAUL RY. CO.	EASEMENT	4-17-22	1165-312, 4-18-22
	WILLIAM NELSON & WIFE	MILWAUKEE & ST. PAUL RY. CO.	EASEMENT	4-17-22	1165-312, 4-18-22
	WILLIAM NELSON & WIFE	MILWAUKEE & ST. PAUL RY. CO.	EASEMENT	4-17-22	1165-312, 4-18-22
	WILLIAM NELSON & WIFE	MILWAUKEE & ST. PAUL RY. CO.	EASEMENT	4-17-22	1165-312, 4-18-22
	WILLIAM NELSON & WIFE	MILWAUKEE & ST. PAUL RY. CO.	EASEMENT	4-17-22	1165-312, 4-18-22
	WILLIAM NELSON & WIFE	MILWAUKEE & ST. PAUL RY. CO.	EASEMENT	4-17-22	1165-312, 4-18-22

State of Illinois  
County of Cook

I, the undersigned, officer of the Chicago, Milwaukee & St. Paul Railway Co. do hereby certify that this is a correct map, in a series of primary sheets and 3 supplemental sheets, of said railroad, from survey station 502+93.3 to survey station 556+210 prepared from the records of said company.

*A. E. Lodge*  
Validation Engineer

*W. W. Spawny*  
Assistant to President

Subscribed and sworn to before me this 14 day of December 1921  
*Francis M. Oakley*  
Notary Public in and for the County of Cook, State of Illinois

My commission expires April 1, 1922

MILW INTEREST SOLD  
BY QCD TO UP ON 12-19-80

**RIGHT OF WAY AND TRACK MAP**  
**CHICAGO, MILWAUKEE & ST. PAUL RY. CO.**  
O. W. R. AND N. CO. JOINT AND EQUAL OWNERS EXCEPT WHERE NOTED.  
OPERATED BY THE  
**CHICAGO, MILWAUKEE & ST. PAUL RY. CO.**  
COAST DIVISION  
STATION 502+93.3 TO 556+210  
UP (CWRR&N) KING CO.

SCALE: 1" = 4 MILES  
OFFICE OF THE ENGINEER  
CHICAGO, ILL.

BR TACOMA TO SEATTLE  
1" = 400'

VW 5